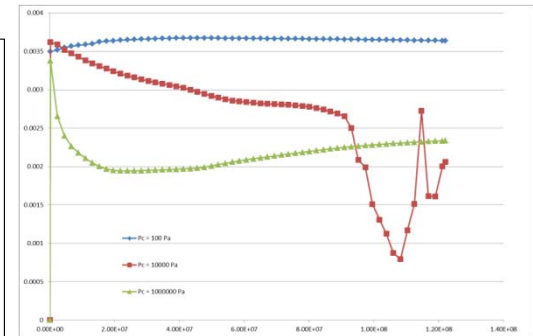
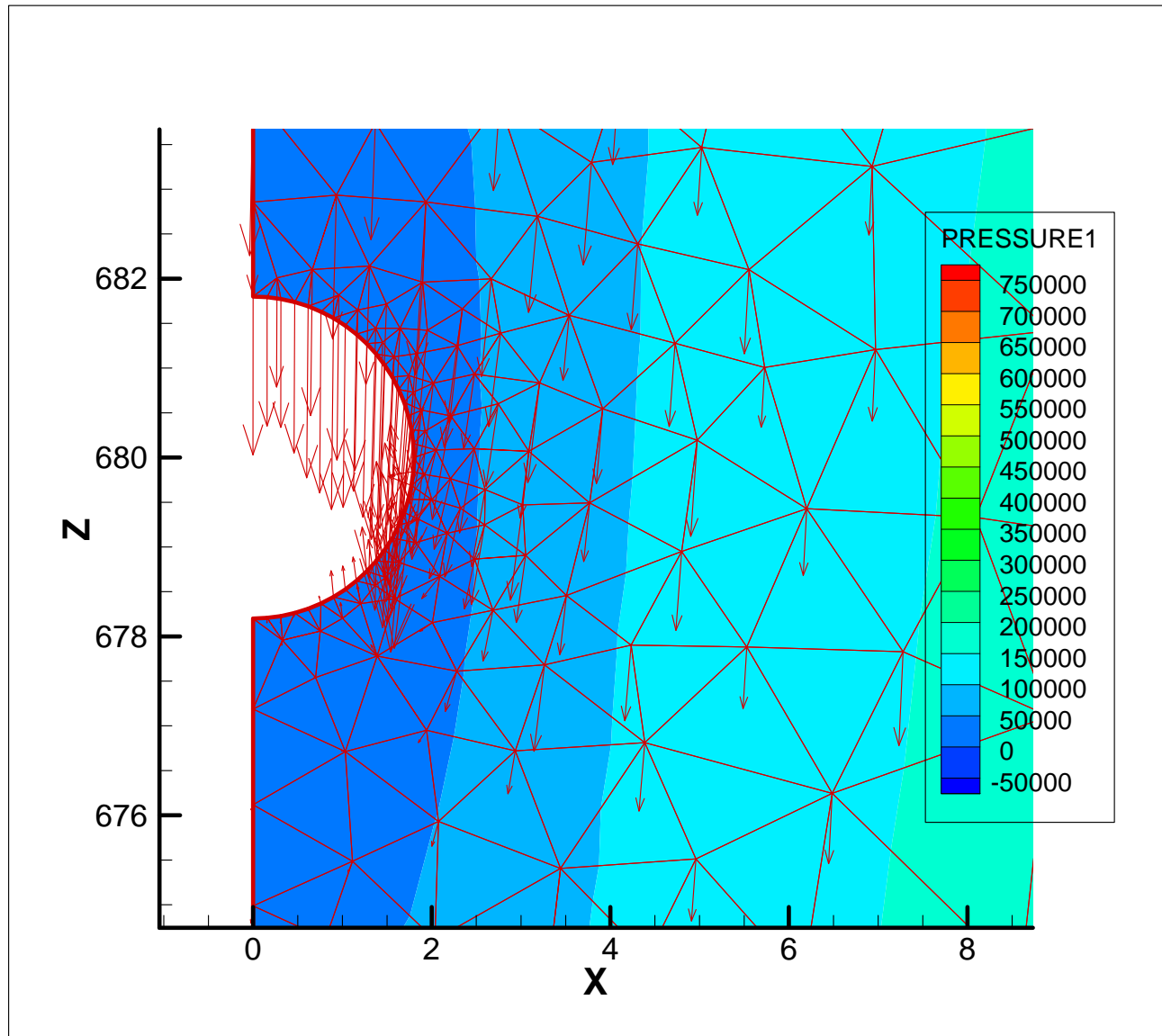
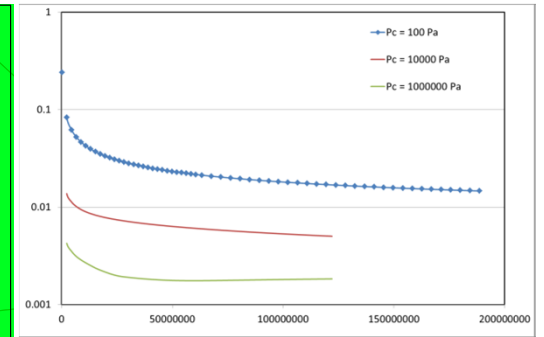
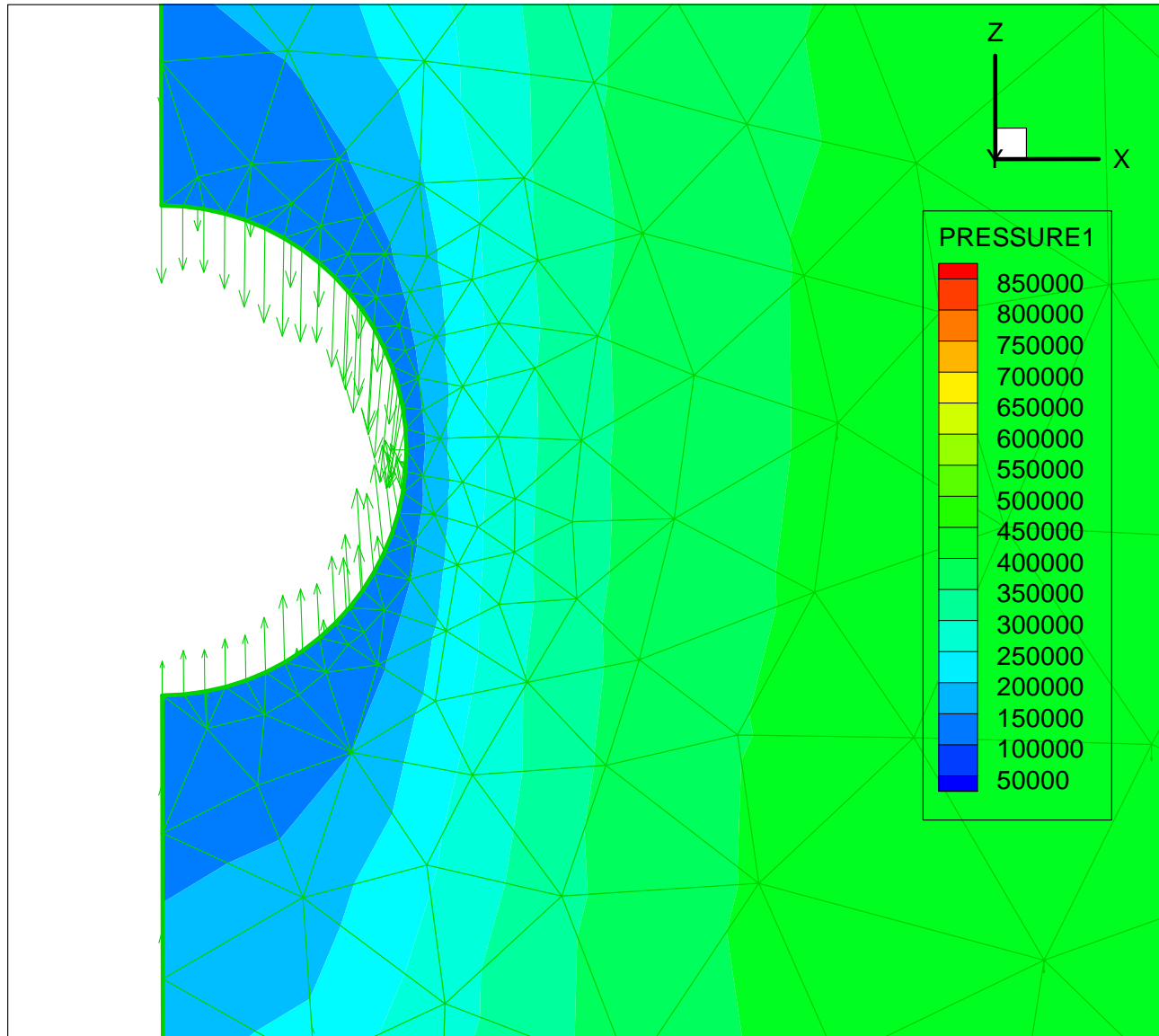


OGS:
Groundwater_Flow
Coupled 2D/3D
Both pressure and
velocity distribution
look acceptable



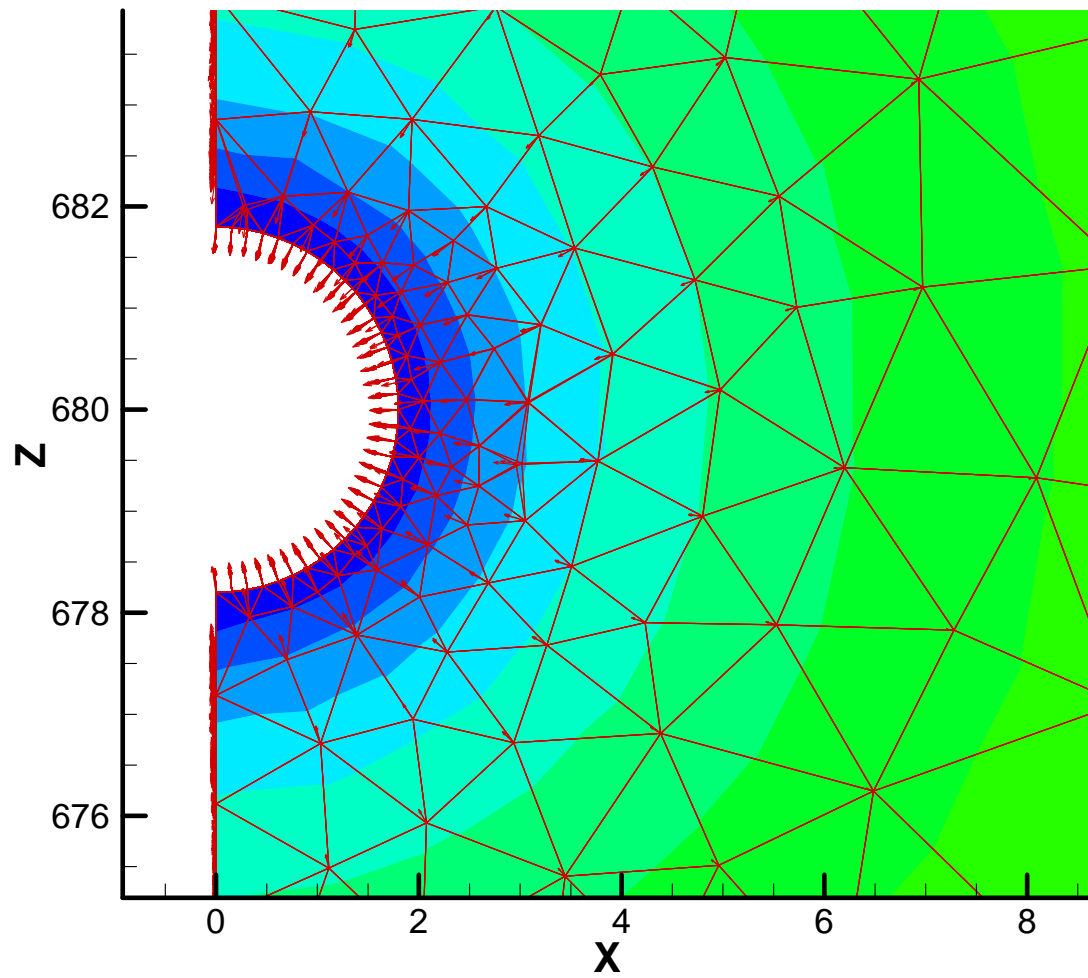
Dependency of tunnel inflow rate on capillarity

OGS (**V5.5**):
 Richards_Flow
 Coupled 2D/3D
 Velocity distribution
 problematic



Dependency of tunnel inflow rate on capillarity

OGS (V5.4):
 Richards_Flow
 Coupled 2D/3D
 Velocity distribution
 problematic



OGS (V5.4):
Richards_Flow
Only 3D
Velocity distribution
looks acceptable